

**NOTES**

This drawing and design is for use solely in connection with the project described. Use without permission is prohibited.

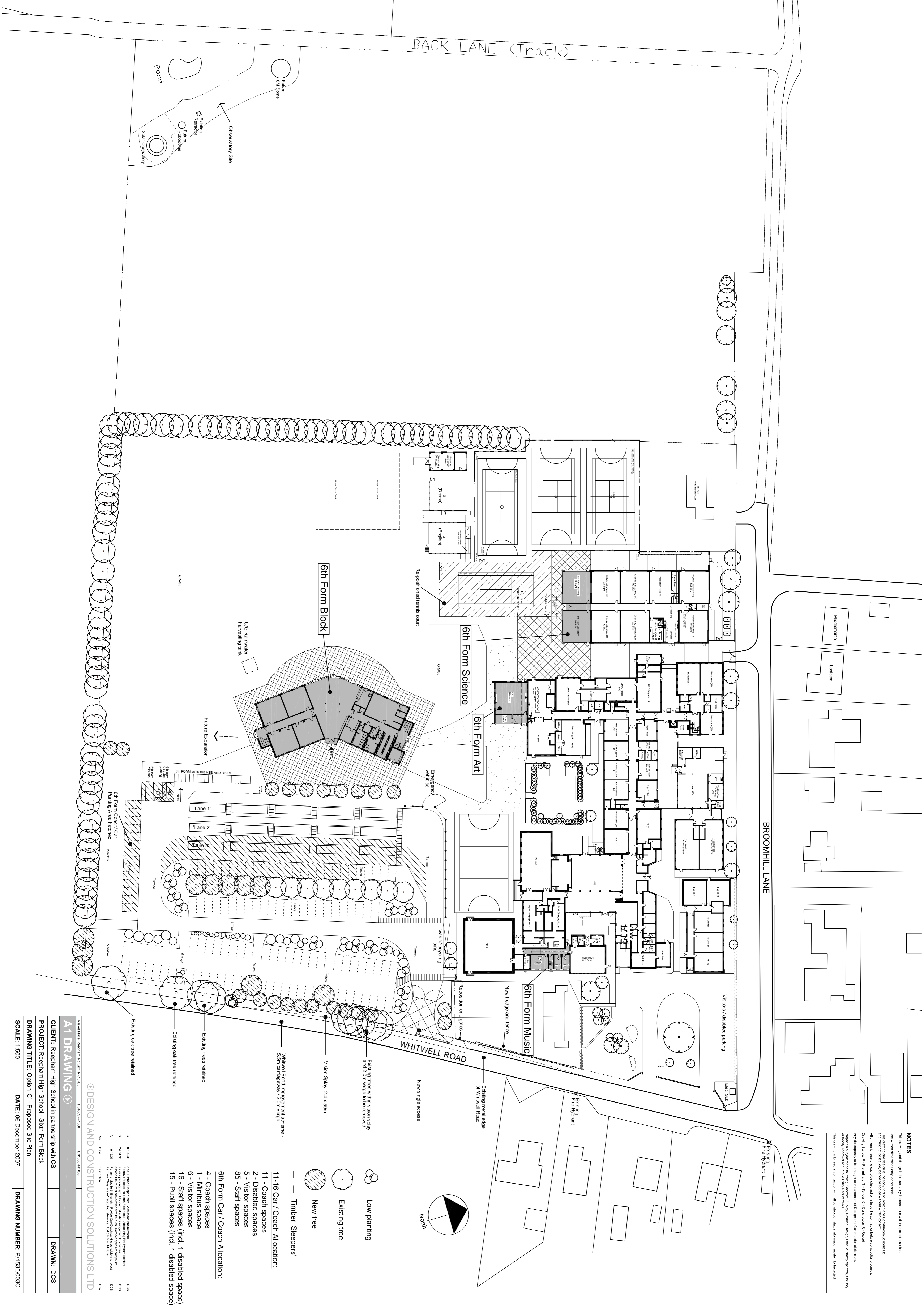
The drawing and design is the property of Design and Construction Solutions Ltd and must not be copied, altered or used in any other way without written consent.

All dimensions shall be in metres unless otherwise stated.

Drawings Status: P - Preliminary, T - Tender, C - Contract, S - Shovel

Any drawings to be brought to the attention of Design and Construction Solutions Ltd must be submitted to the Project Manager, Design and Construction Solutions Ltd, for their approval and signed by the Project Manager.

This drawing is made in connection with all construction status information referred to in the project.



- Low planting
- Existing tree
- New tree
- Timber Sleepers
- 11-16 Car / Coach Allocation:
- 11 - Coach spaces
- 2 - Disabled spaces
- 3 - Visitor spaces
- 85 - Staff spaces
- 6th Form Car / Coach Allocation:
- 4 - Coach spaces
- 1 - Minibus space
- 6 - Visitor spaces
- 16 - Staff spaces (incl. 1 disabled space)
- 15 - Pupil spaces (incl. 1 disabled space)

No.	Date	Description	By	Check
07/02/08		Add Timber Sleepers - see Additions/Deletions	DCS	
09/02/08		Remove 'X' marks to coach car zone. Additions/Deletions	DCS	
24/11/08		Amend 6th form staff allocation table. Remove disabled compound	DCS	
19/12/07		Remove 'Open Visitor' parking spaces. Add 6th form staff	DCS	

DESIGN AND CONSTRUCTION SOLUTIONS LTD

<b>A1 DRAWING</b>	1.0003.411008	1.0003.411008
<b>CLIENT:</b> Reepham High School in partnership with CS		<b>DRAWN:</b> DCS
<b>PROJECT:</b> Reepham High School - Sixth Form Block		
<b>DRAWING TITLE:</b> Option C - Proposed Site Plan		
<b>SCALE:</b> 1:500	<b>DATE:</b> 06 December 2007	<b>DRAWING NUMBER:</b> P/1530/003C